



GMT MONTHLY MEMBERSHIP PROGRESS REPORT

Results as of: 11/30/2023

Multiple District 201

LOCATION: AUSTRALIA

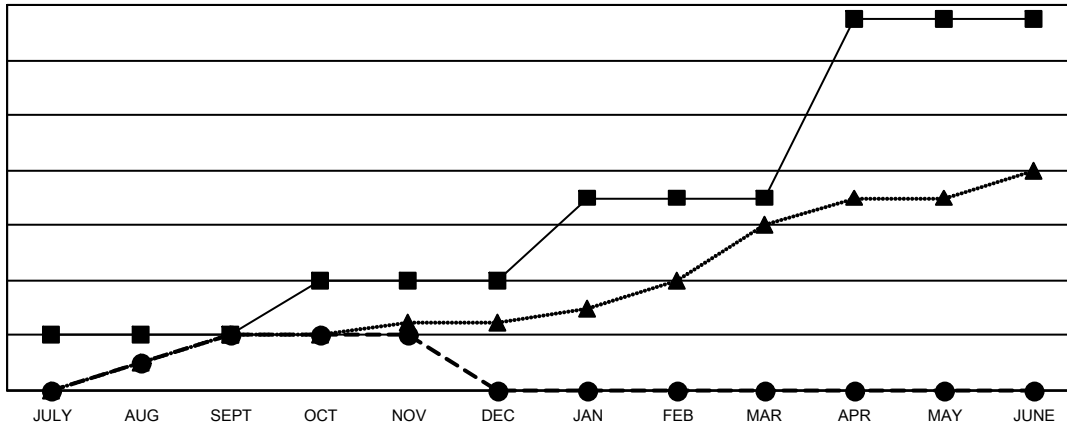
GMT: OPEN

GMT CA 7

Clubs			
RESULTS FOR 2023-2024			
QUARTER	NEW CLUB GOAL	NEW CLUBS	DROPPED CLUBS
JULY/AUG/SEPT	4	4	10
OCT/NOV/DEC	4	0	0
JAN/FEB/MAR	6	0	0
APR/MAY/JUNE	13	0	0

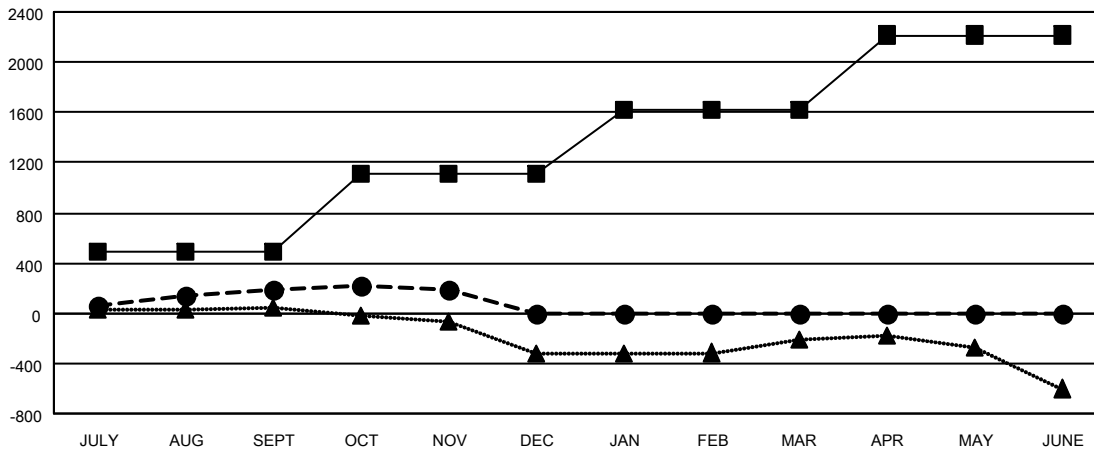
Members			
RESULTS FOR 2023-2024			
QUARTER	MEMBER GROWTH NET GOAL	MEMBER GROWTH ACTUAL	DROPPED MEMBERS ACTUAL (including transfers)
JULY/AUG/SEPT	495	897	607
OCT/NOV/DEC	617	434	403
JAN/FEB/MAR	510	0	0
APR/MAY/JUNE	595	0	0

GOALS AND ACTUAL NEW CLUBS CUMULATIVE



- - CURRENT YEAR GOALS FOR NEW CLUBS
- - CURRENT YEAR ACTUAL NEW CLUBS
- ▲ - LAST YEAR ACTUAL NEW CLUBS

GOALS AND ACTUAL MEMBERS CUMULATIVE



- - MEMBER GROWTH NET GOAL
- - MEMBER GROWTH ACTUAL
- ▲ - LAST YEAR MEMBERSHIP ACTUAL

DROPPED CLUBS: 10	494 CLUBS OF 1151 ADDED 1 OR MORE NEW MEMBERS	GENDER DISTRIBUTION MALE 13,928 (61.77%) FEMALE 8,621 (38.23%)
	DROPPED MEMBERS DECEASED 124 CLUB CANCELLED 0 OTHER 886 TOTAL 1,010	CLICK HERE FOR CUMULATIVE MEMBERSHIP DATA